

# 496.3.444

## Vacuum cleaner motor performance

# DOMEL®

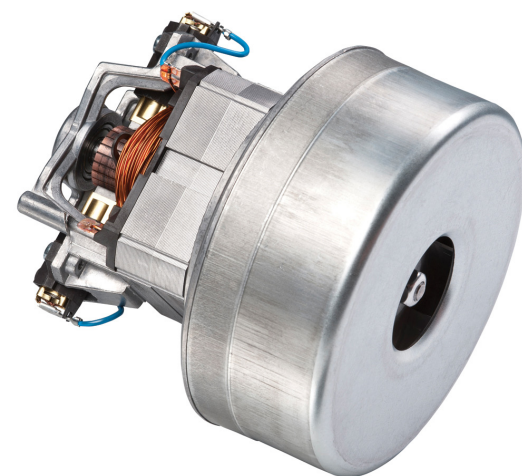
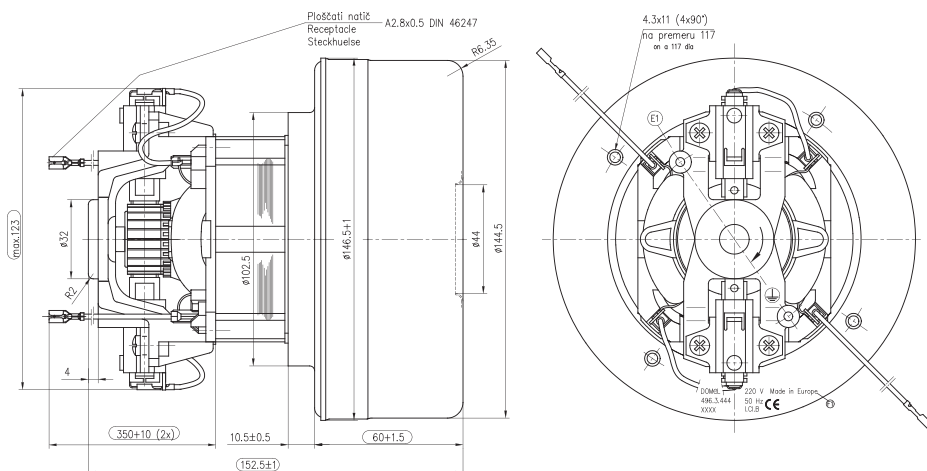
Vacuum cleaner motors 496.3.444 / 1400W / 220V / 50Hz are used for dry aspiration. Technical data and dimensions are given in the table. Vacuum motors consist of universal commutator motor and two fan stage. The rotor is supported with two ball bearings enabling vertical or horizontal installation of motor. The motor is designed for insulation class 130(B) and constructed according to EN 60335-1.

### Technical data:

Normal operation:	$P_m$	$\geq$	1400	W
Vacuum:	$P_{max}$	$\geq$	24,9 100,1	kPa in H <sub>2</sub> O
Air Flow at $\phi 50$ :	$Q_{\phi 50}$	$\geq$	58 123	dm <sup>3</sup> /s CFM
Air Power:	$P_{2max}$	$\geq$	460	W
Efficiency:	$\eta_{max}$	$\geq$	34	%
Mass:	m	=	2,07	kg

## Max. power 1450W

Voltage:	220 V
Frequency:	50 Hz
Nominal Power:	1400 W



Dimensional and performance data are subject to change without notice.

Orifice		Current	Input Power	Speed	Pressure		Air Flow		Air power	Efficiency
mm	in*	A	W	min <sup>-1</sup>	kPa	in H <sub>2</sub> O	dm <sup>3</sup> /s	CFM	W	%
50	2	0,00	0	0	0,0	0,0	0,0	0,0	0	0,0
40	1 1/2	6,83	1448	20847	3,3	16,9	55,0	113,8	180	12,4
30	1 1/8	6,81	1447	20920	8,2	37,1	48,2	96,9	393	27,2
23	7/8	6,44	1371	21531	13,5	56,4	36,0	72,5	485	35,3
19	3/4	6,04	1291	22398	16,5	66,1	27,0	57,4	445	34,5
16	5/8	5,69	1218	23216	18,6	75,0	20,3	42,4	376	30,9
13	1/2	5,27	1130	24197	20,5	83,0	14,0	28,5	287	25,4
10	3/8	4,84	1043	25548	22,4	90,7	8,7	17,0	194	18,6
6	1/4	4,37	944	27343	24,0	96,6	3,8	7,9	92	9,8
0	0	3,96	858	29134	26,2	105,3	0,0	0,0	0	0,0

Data above represent the performance of an average motor sample. Individual data may vary due to normal manufacturing variations.

\* Orifice in inch is only approximative.