

482.3.505

DC motor performance

DOMEL®

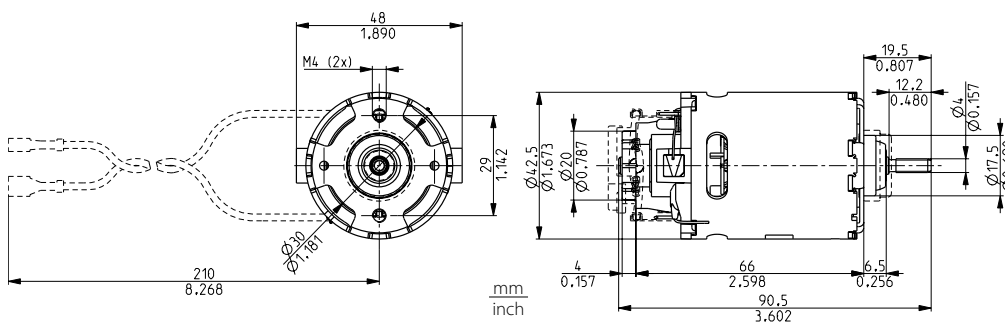
Technical data:

DC motors 482.3.505/ 55W/ 230V/ 0-50Hz are designed for incorporation into various household appliances such as vacuum cleaner power brushes, coffee mills, mixers, food processors, etc. where small dimensions, low weight, high power and long life are requested. Technical data and dimensions are given in the table. Our DC motors can operate in different positions. Shaft can also be adapted to customers needs.

The motors is constructed according to EN 60335-1.

Code:	482.3.505
Voltage/frequency:	230 V/50 Hz
	+ Graetz
Rated input power:	55 W
Rated speed:	9200 min ⁻¹
Rated output power:	27 W
Rated torque:	3 Ncm / 4,2 oz-in
Direction of rotation:	CCW
Type of operation:	S1
	by EN 60034-1
Ventilation:	internal
Mass:	0,26 kg

Also available in 100V and 120V version



Dimensional and performance data are subject to change without notice.

Voltage	Current	Input Power	Speed	Torque		Output power	Efficiency
				Ncm	oz-in		
V	A	W	min ⁻¹			W	%
230	0,14	26	11450	0,0	0,0	0	0,0
230	0,25	49	9836	2,0	2,8	21	42,4
230	0,30	60	9203	3,0	4,2	29	48,5
230	0,34	71	8603	4,0	5,7	36	51,1
230	0,44	92	7547	6,0	8,5	47	51,5
230	0,53	113	6523	8,0	11,4	55	48,6
230	0,62	134	5593	10,0	14,2	59	43,9
230	0,70	154	4624	12,0	17,0	58	37,9
230	0,78	172	3657	14,0	19,8	54	31,0
230	0,85	190	2563	16,0	22,6	43	22,6
230	1,05	236	93	22,3	31,6	2	0,9

Data above represent the performance of an average motor sample. Individual data may vary due to normal manufacturing variations.