

482.3.714

DC motor performance

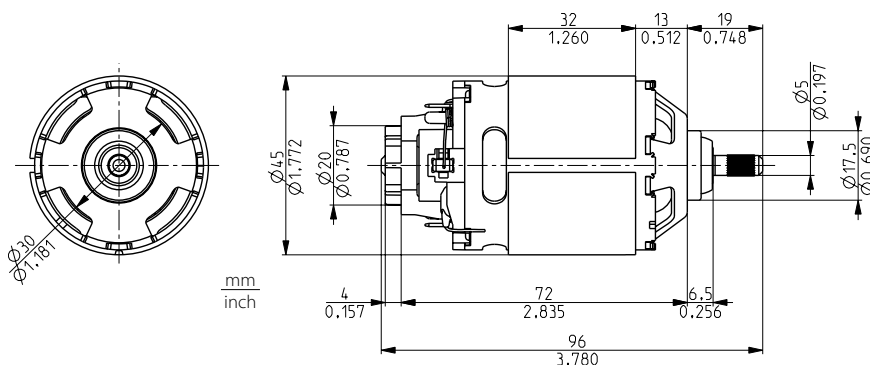
DOMEL®

DC motors 482.3.714/ 350W/ 220 - 240 V/ 0-50 Hz are designed for incorporation into various household appliances such as coffee mills, mixers, food processors, etc. where small dimensions, low weight and high power are requested. Technical data and dimensions are given in the table. Our DC motors can operate in different positions. Shaft can also be adapted to customers needs. The motors is constructed according to EN 60335-1.

Technical data:

Code:	482.3.714
Voltage/frequency:	220 - 240 V/50 Hz + Graetz
Rated input power:	350 W
Rated speed:	8800 min ⁻¹
Rated output power:	185 W
Rated torque:	20 Ncm / 28,3 oz-in
Direction of rotation:	CW
Type of operation:	15 s "ON" 3 min "OFF" 3 periods
Ventilation:	without
Mass:	0,35 kg

Also available in 100V and 120V version



Dimensional and performance data are subject to change without notice.

Voltage V	Current A	Input Power W	Speed min ⁻¹	Torque		Output power W	Efficiency %
				Ncm	oz-in		
230	0,16	27	17325	0,0	0,0	0	0,0
230	0,33	61	16054	2,0	2,8	34	54,9
230	0,49	94	14955	4,0	5,7	63	66,8
230	0,64	126	14004	6,0	8,5	88	69,7
230	0,79	157	13181	8,0	11,3	110	69,9
230	0,93	190	12462	10,0	14,1	130	68,3
230	1,07	222	11710	12,0	16,9	147	65,9
230	1,22	256	10978	14,0	19,8	161	62,9
230	1,35	286	10293	16,0	22,6	172	60,1
230	1,49	318	9567	18,0	25,5	180	56,7
230	1,62	350	8812	20,0	28,3	185	52,8
230	1,75	381	8092	22,0	31,1	186	48,9
230	1,88	416	7376	24,0	34,0	185	44,6
230	2,00	446	6481	26,0	36,8	176	39,5
230	2,12	476	5514	28,0	39,6	162	33,9
230	2,22	501	4420	30,0	42,5	139	27,7
230	4,49	1000	0	51,0	72,2	0	0,0

Data above represent the performance of an average motor sample. Individual data may vary due to normal manufacturing variations.